

DAIKIN



OPERATION MANUAL

Split system air conditioners

FHYBP35B7V1
FHYBP45B7V1
FHYBP60B7V1
FHYBP71B7V1
FHYBP100B7V1
FHYBP125B7V1

FHYBP71B8V1
FHYBP100B8V1
FHYBP125B8V1

FHYCP35B7V1
FHYCP45B7V1
FHYCP60B7V1
FHYCP71B7V1
FHYCP100B7V1
FHYCP125B7V1

FHYCP71B8V1
FHYCP100B8V1
FHYCP125B8V1

FDYP125B7V1
FDYP200B7V1
FDYP250B7V1

FDYP125B8V1
FDYP200B8V1
FDYP250B8V1

FBQ35B7V1
FBQ50B7V1
FBQ60B7V1
FBQ71B7V3B
FBQ100B7V3B
FBQ125B7V3B

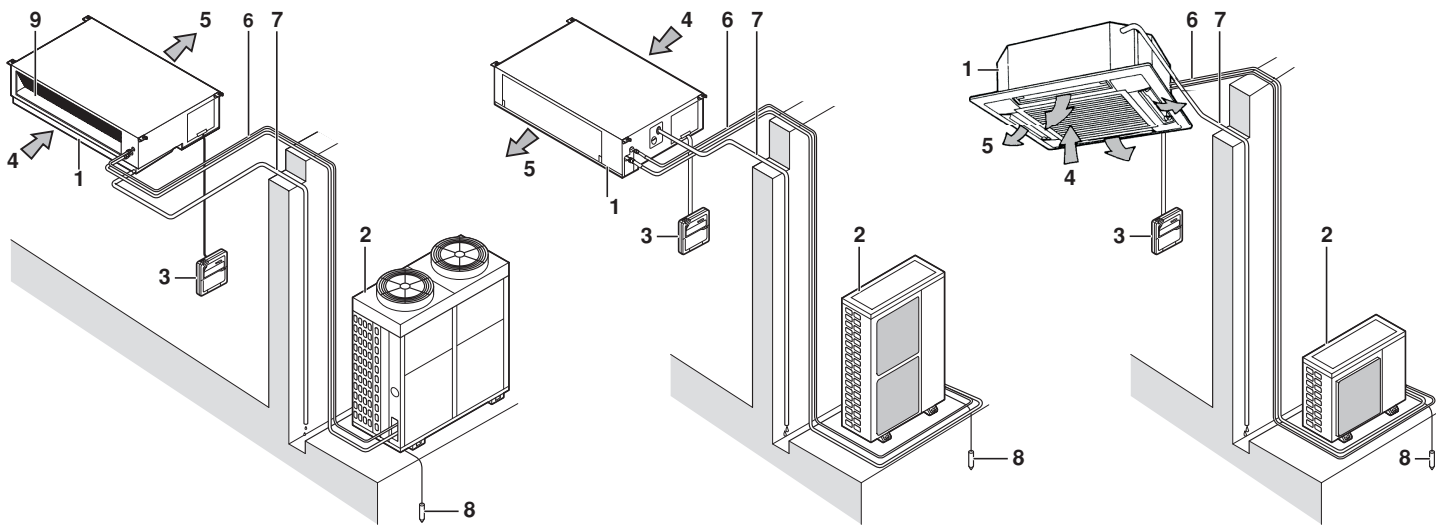
FBQ35B8V1
FBQ50B8V1
FBQ60B8V1
FBQ71B8V3B
FBQ100B8V3B
FBQ125B8V3B

FCQ35B7V1
FCQ50B7V1
FCQ60B7V1
FCQ71B7V3B
FCQ100B7V3B
FCQ125B7V3B

FCQ35B8V1
FCQ50B8V1
FCQ60B8V1
FCQ71B8V3B
FCQ100B8V3B
FCQ125B8V3B

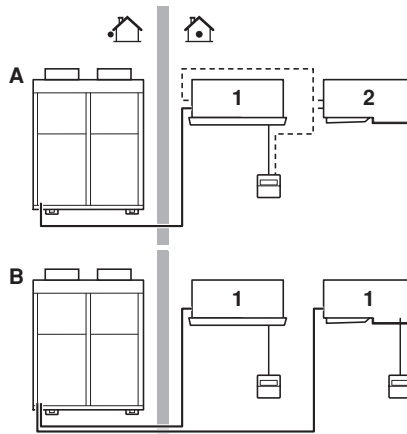
FDQ125B7V3B
FDQ200B7V3B
FDQ250B7V3B

FDQ125B8V3B

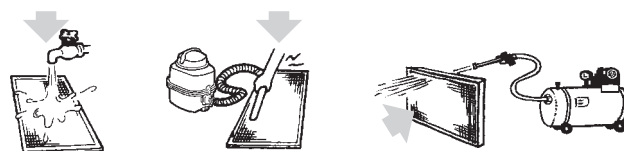


1

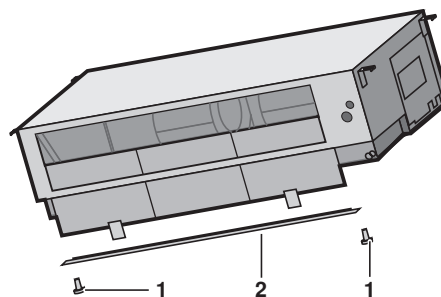
❄️	🏠		💧	🏠R407C	🏠R410A
	°C DB	°C WB		°C	°C
R35-45-60	18-33	12-24	≤80%	-15~43	—
RR71-100-125	18-35	14-25		—	-15~46
RP200-250	18-35	14-24		-5~43	—
RY35-45-60	18-33	12-24	≤80%	-5~43	—
RQ71-100-125	18-35	12-25		—	-5~46
RS50-60	21-32	14-23	≤80%	—	-10~46
RKS35-50-60	21-32	14-23		—	-10~46
RXS35-50-60	21-32	14-23		—	-10~46
3MKS50	21-32	14-23	≤80%	—	-10~46
4MKS58-75-90	21-32	14-23		—	-10~46
3MXS52	18-35	14-28		—	-5~46
4MXS68-80	18-35	14-28		—	-5~46
RZQ71-100-125-140	18-35	12-28	≤80%	—	-15~50
RZQ200-250	18-35	14-28	≤80%	—	-5~46



2



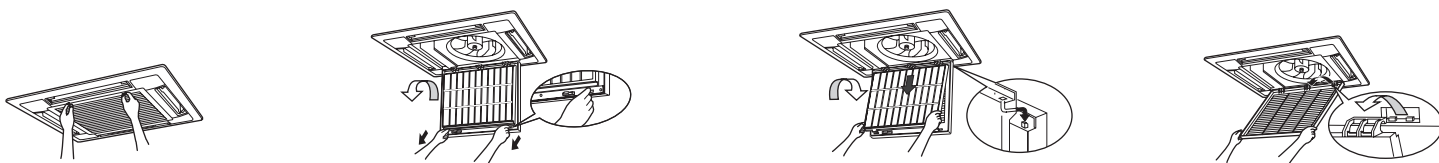
3



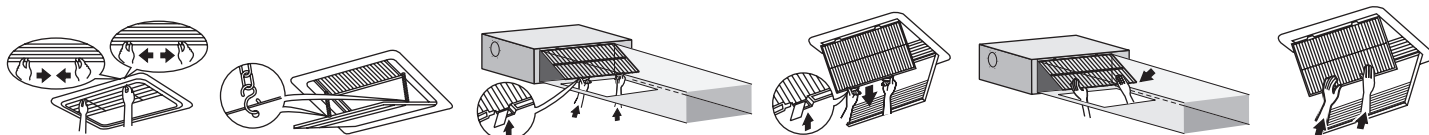
5

☀️	🏠	🏠
	°C	°C
RY35-45-60	15-27	°C DB -9~21 °C WB -10~15.5
RQ71-100-125	15-24	°C DB -9~21 °C WB -10~15
RYP200-250	15-24	°C DB -9~21 °C WB -10~15.5
RXS35-50-60	10-30	°C DB -14~24 °C WB -15~18
3MXS52	10-30	°C DB -14~21 °C WB -15~15.5
4MXS68-80	10-30	°C DB -14~21 °C WB -15~15.5
RZQ71-100-125-140	10-27	°C DB -13~21 °C WB -20~15.5
RZQ200-250	10-27	°C DB -14~21 °C WB -15~15

4



6



7

CONTENTS

	Page
What to do before operation	1
Names and functions of parts.....	1
Operation range.....	2
Installation and installation site.....	2
Operation procedure.....	2
Optimum operation	2
Not a malfunction of the air conditioner	3
Troubleshooting	4
Maintenance	4



THANK YOU FOR PURCHASING THIS DAIKIN AIR CONDITIONER. CAREFULLY READ THIS OPERATION MANUAL BEFORE USING THE AIR CONDITIONER. IT WILL TELL YOU HOW TO USE THE UNIT PROPERLY AND HELP YOU IF ANY TROUBLE OCCURS. AFTER READING THE MANUAL, FILE IT AWAY FOR FUTURE REFERENCE.

WHAT TO DO BEFORE OPERATION (See figure 2)

Ask your dealer for installation and re-installation of the air conditioner.

Incomplete installation performed by yourself may result in water leakage, electric shock and fire.

Be sure only to use accessories made by Daikin which are specifically designed for use with the equipment and have them installed by a professional.

This operation manual is for the following systems with standard control. Before initiating operation, contact your Daikin dealer for the operation manual that corresponds to your system.

If your installation has a customised control system, ask your Daikin dealer for the operation that corresponds to your system.

- A Pair system or simultaneous operation system
- B Multi system
- 1 Unit with remote controller
- 2 Unit without remote controller (When used as simultaneous operation)

- Heat pump type
This system provides cooling, heating, automatic, and fan operation modes.
- Straight cooling type
This system provides cooling, and fan operation modes.



- It is not good for your health to expose your body to the direct air flow for a long time.
- In order to avoid electric shock, fire or injury, if you detect any abnormality such as smell of fire, turn off power and call your dealer for instructions.
- Never let the indoor unit and the remote controller get wet. Do not operate the air conditioner with wet hands.
It may cause an electric shock or a fire.
- Do not put a finger, rod or other objects into the air inlet or outlet. As the fan is rotating at high speed, it will cause injury.
- Never remove the fan guard of the outdoor unit.
The rotating fan at high speed without the guard is very dangerous.
- Ask your dealer for improvement, repair and maintenance. Never inspect or service the unit by yourself.
Incomplete improvement, repair and maintenance may result in water leakage, electric shock and fire.
- The refrigerant in the air conditioner is safe and normally does not leak. If the refrigerant leaks inside the room, the contact with a fire of a burner, heater or cooker may result in a harmful gas.
Do not use the air conditioner until a service person confirms to finish repairing the portion where the refrigerant leaks.
- For refrigerant leakage, consult your dealer.
When the air conditioner is to be installed in a small room, it is necessary to take proper measures so that the amount of any leaked refrigerant does not exceed the concentration limit, even when it leaks.
If the refrigerant leaks exceed the level of the concentration limit, an oxygen deficiency accident may happen.

NAMES AND FUNCTIONS OF PARTS (See figure 1)

- 1 Indoor unit
- 2 Outdoor unit
- 3 Remote controller
- 4 Inlet air
- 5 Discharged air
- 6 Refrigerant piping, connection electric wire
- 7 Drain pipe
- 8 Ground wire
Wire to ground outdoor unit to prevent electric shocks.
- 9 Air filter

NOTE

These units can be controlled by a remote controller. Refer to the manual of the remote controller for more information.

Never press the button of the remote controller with a hard pointed object. The remote controller may get damaged.

Never pull or twist the electric wire of a remote controller. It may cause the unit to malfunction.

Never touch the internal parts of the controller. Do not remove the front panel. Some parts inside are dangerous to touch and a machine trouble may happen. For checking and adjusting the internal parts, contact your dealer.

Do not wipe the controller operation panel with benzene, thinner, chemical dust cloth, etc.

The panel may get discolored or the coating may peel off. If it is very dirty, soak a cloth in water-diluted neutral detergent, squeeze it well and wipe the panel clean. Wipe it with another dry cloth.

OPERATION RANGE (See figure 4)

If operating outside the following conditions, safety devices may activate, rendering the air conditioner inoperable or may cause the indoor unit to sweat.

The setting temperature range of the remote controller is 16°C–32°C.

(DB=dry bulb, WB=wet bulb, ❄=cooling, ☀=heating, 🏠=indoor, 🏠=outdoor, ℹ°C=temperature, 💧=humidity)

INSTALLATION AND INSTALLATION SITE

- Never place anything under the indoor unit that you don't want to get wet.
The unit may sweat when the humidity is over 80% or when the drain outlet is clogged.
- Never place other heating equipment directly beneath the indoor unit. Subject to deformation caused by heat.
- Do not place TV, radio, stereo, etc. within 1 meter from the indoor unit and remote controller.
Doing so may cause interference in the picture or sound.
- Never use flammable spray such as hair spray, lacquer or paint near the unit.
It may cause a fire.
- Never replace a fuse with that of a wrong ampere rating or other wires when the fuse blows out.
Use of wire or copper wire may cause the unit to break down or cause a fire.
- Do not place appliances which produce open fire in places exposed to the air flow from the unit or under the indoor unit.
It may cause incomplete combustion or deformation of the unit due to the heat.

OPERATION PROCEDURE

- If a function that is not available is selected, the message NOT AVAILABLE will appear.
- Operating procedure varies with heat pump type and straight cooling type. Contact your Daikin dealer to confirm your system type.
- To protect the unit, turn on the main power switch 6 hours before operation.
- If the main power supply is turned off during operation, operation will restart automatically after the power turns back on again.

NOTE

Set the temperature within the ranges mentioned under "Operation range" on page 2.

Precautions for group control system or two remote controller control system

This system provides two other control systems beside individual control (one remote controller controls one indoor unit) system. Confirm the following if your unit is of the following control system type.

- Group control system
One remote controller controls up to 16 indoor units.
All indoor units are equally set.
- Two remote controller control system
Two remote controllers control one indoor unit (In case of group control system, one group of indoor units). The unit is individually operated.

NOTE

Contact your Daikin dealer in case of changing the combination or setting of group control and two remote controller control systems.

OPTIMUM OPERATION

Observe the following precautions to ensure the system operates properly.

- Adjust the air outlet properly and avoid direct air flow to room inhabitants.
- Adjust the room temperature properly for a comfortable environment. Avoid excessive heating or cooling.
- Prevent direct sunlight from entering a room during cooling operation by using curtains or blinds.
- Ventilate the room regularly. Using the unit for long periods of time requires attentive ventilation of the room.
- Do not operate the air conditioner when using a room fumigation-type insecticide.
Failure to observe this could cause the chemicals to become deposited in the unit, which could endanger the health of those who are hypersensitive to chemicals.
- Keep doors and windows closed. If the doors and windows remain open, room air will flow out and decrease the effect of cooling and heating.
- Never place objects near the air inlet and the air outlet of the unit. It may retard effectiveness or cause operation to stop.
- Turn off the main power supply switch when not using for long periods of time. Electricity is consumed as long as the switch is on. Turn off the main power supply switch in order to save energy. Turn on the main power supply switch 6 hours before restarting operation in order to ensure smooth operation. (Refer to "Maintenance" on page 4.)
- When the display shows "🏠" (TIME TO CLEAN AIR FILTER), have a qualified service person to clean the filters. (Refer to "Maintenance" on page 4.)




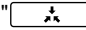
Do not use the air conditioner for other purposes.

In order to avoid any quality deterioration, do not use the unit for cooling precision instruments, food, plants animals or works of art.

NOT A MALFUNCTION OF THE AIR CONDITIONER

The following symptoms do not indicate air conditioner malfunction.

The system does not operate

- The system does not restart immediately after the ON/OFF button is pressed.
If the OPERATION lamp lights, the system is in its normal operating condition.
It does not restart immediately because one of its safety devices actuates to prevent the system from being overloaded.
The system will turn on again automatically after three minutes.
- The system does not restart immediately when the TEMPERATURE SETTING button is returned to its former position after pushing.
It does not restart immediately because one of its safety devices actuates to prevent the system from being overloaded.
The system will turn on again automatically after three minutes.
- The system does not start when the display shows " (EXTERNAL CONTROL ICON) and it flashes for a few seconds after pressing an operation button.
This is because the system is controlled or disabled by another controller with a higher priority.
When the display flashes, it indicates that the system cannot be controlled by this indoor unit.
- The system does not start immediately after the power supply is turned on.
Wait one minute until the micro computer is prepared for operation.
- The outdoor unit has stopped.
This is because the room temperature has reached the set temperature. The unit switches to fan operation.
" (EXTERNAL CONTROL ICON) is displayed on the remote controller and the actual operation is different from the remote controller setting.
For multi split models, the micro computer executes the following control depending on the operation mode of other indoor units.
 - Before you start to operate, the other indoor unit(s) is (are) already operating. When the operation mode of this unit is different from your choice, the indoor unit of your room may be put in waiting condition. (Fan: Stop, Horizontal flap: Horizontal position)

Your room	Operation mode			
	Cooling	Dry	Fan only	Heating
Cooling	O	O	O	W
Dry	O	O	O	W
Fan only	O	O	O	W
Heating	W	W	W	O

O: your unit can operate
W: your unit in waiting mode

- When the total cooling capacity of all indoor units which are operating is beyond the capacity limit of the outdoor unit, your indoor unit will be put in waiting condition. (Fan and horizontal flap: Same as setting: (cooling only model only))
- After cooling mode operation of the unit of your room, when other unit(s) start to operate, the unit of your room may operate as follows: Fan: L tab, Horizontal flap: Horizontal position.

- The fan speed is different from the setting. Pressing the fan speed control button does not change the fan speed.
When the room temperature reaches the set temperature in heating mode, the capacity supply from the outdoor unit has stopped and the indoor unit operates in fan only mode (L tab). In case of multi split, the indoor unit alternately operates fan stop and fan only mode (L tab).
This is to prevent the cool air from being blown directly onto anyone present in the room.

Air blow direction is not as specified

- Actual air blow direction is not as shown on the remote controller.
- Automatic swing setting does not work.

Refer to the manual of the remote controller.

White mist comes out of a unit

- When humidity is high during cooling operation (In oily or dusty places).
If the inside of an indoor unit is extremely contaminated, the temperature distribution inside a room becomes uneven. It is necessary to clean the inside of the indoor unit. Ask your Daikin dealer for details on cleaning the unit. This operation requires a qualified service person.
- When the system is changed over to HEATING OPERATION after DEFROST OPERATION.
Moisture generated by DEFROST becomes steam and exits.

Noise of air conditioners

- A "ringing" sound is heard after the unit is started.
This sound is generated by the temperature regulator working. It will quiet down after about a minute.
- A continuous low "hissing" sound is heard when the system is in COOLING or DEFROST OPERATION.
This is the sound of refrigerant gas flowing through both indoor and outdoor units.
- A "hissing" sound which is heard at the start or immediately after the stop of operation or which is heard at the start or immediately after the stop of DEFROST OPERATION.
This is the noise of refrigerant caused by flow stop and flow change.
- A continuous low "swishing" sound is heard when the system is in COOLING OPERATION or at a stop.
The noise is heard when the drain pump is in operation.
- A "squeaking" sound is heard when the system is in operation or after the stop of operation.
Expansion and contraction of plastic parts caused by temperature change makes this noise.

Dust from the units

- Dust may blow out from the unit after starting operation from long resting time. Dust absorbed by the unit blows out.

The units give off odours

- The unit absorbs the smell of rooms, furniture, cigarettes, etc., and then emits them.

The liquid crystal display of the remote controller shows "BB"

- Happens immediately after the main power supply switch is turned on.
Shows that the remote controller is in normal condition. Continues temporarily.

TROUBLESHOOTING


If one of the following malfunctions occurs, take the measures shown below and contact your Daikin dealer.

The system must be repaired by a qualified service person.

WARNING

When the air conditioner is in abnormal conditions (burning smell, etc.) unplug the power cord from the outlet and contact your dealer.

Continued operation under such circumstances may result in a failure, electric shock and fire.

- If a safety device such as a fuse, a breaker, or an earth leakage breaker frequently actuates, or ON/OFF switch does not properly work.
Measure: Turn off the main power switch.
- If water leaks from unit.
Measure: Stop the operation.
- If the display " (INSPECTION), "UNIT No.", and the OPERATION lamp flashes and the "MALFUNCTION CODE" appears.
Measure: Notify your Daikin dealer and inform him/her of the display.

If the system does not operate properly, except for the above mentioned case, and none of the above mentioned malfunctions are evident, investigate the system according to the following procedures.

If the system does not operate at all.

- Check if there is a power failure.
Wait until power is restored. If power failure occurs during operation, the system automatically restarts immediately after the power supply recovers.
- Check if the fuse has blown or breaker has been tripped.
Change the fuse or set the breaker.

If the system stops operating after operation is complete.

- Check if the air inlet or outlet of outdoor or indoor unit is blocked by obstacles.
Remove the obstacle and make it well-ventilated.
- Check if the air filter is clogged.
Ask a qualified service person to clean the air filter.

The system operates but it does not sufficiently cool or heat.

- If the air inlet or outlet of the indoor or the outdoor unit is blocked with obstacles.
Remove the obstacle and make it well-ventilated.
- If the air filter is clogged.
Ask a qualified service person to clean the air filter.
- If the set temperature is not proper. (Refer to the manual of the remote controller)
- If the FAN SPEED CONTROL button is set to LOW SPEED. (Refer to the manual of the remote controller)
- If the air flow angle is not proper. (Refer to the manual of the remote controller)
- If the doors or the windows are open. Shut doors or windows to prevent wind from coming in.
- If direct sunlight enters the room (when cooling).
Use curtains or blinds.
- When there are too many inhabitants in the room. Cooling effect decreases if heat gain of the room is too large.
- If the heat source of the room is excessive (when cooling).
Cooling effect decreases if heat gain of the room is too large.

MAINTENANCE



Caution

- Only a qualified service person is allowed to perform maintenance.
- Before obtaining access to terminal devices, all power supply circuits must be interrupted.
- To clean the air conditioner, be sure to stop operation and turn the power switch off.
Otherwise, an electric shock and injury may result.
- Do not wash the air conditioner with water.
Doing so may result in an electric shock.
- Be careful with scaffoldings.
Caution must be exercised when working in high places.
- After a long use, check the unit stand and fitting for damage. If damaged, the unit may fall and cause injury.
- Do not touch the heat exchanger fins.
The fins are sharp and could result in cutting injuries.
- When cleaning the heat exchanger, be sure to remove the switchbox, fan motor, auxiliary electric heater and drain pump. Water or detergent may deteriorate the insulation of electronic components and result in burn-out of these components.

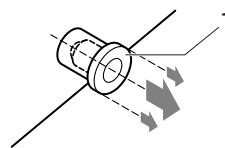


Caution for drain socket

Do not remove the drain pipe plug. Water might leak out.

The drain outlet is only used to discharge water if the drain pump is not used or before maintenance. Gently put in and out the drain plug. Excessive force may deform the drain socket of the drain pan.

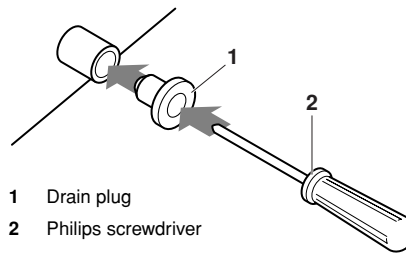
- Pulling out the plug



1 Drain plug

Do not wiggle the plug up and down

- Pushing in the plug




1 Drain plug

2 Philips screwdriver

Set the plug and push it by using a Philips screwdriver

How to clean the air filter

Clean the air filter when the display shows "" (TIME TO CLEAN AIR FILTER).

Increase the frequency of cleaning if the unit is installed in a room where the air is extremely contaminated.

(As a yardstick for yourself, consider cleaning the filter once half a year.)

If the dirt becomes impossible to clean, change the air filter. (Air filter for exchange is optional.)

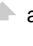
NOTE




Do not wash the air filter with hot water of more than 50°C. Doing so may result in discoloration and/or deformation.

Do not expose the unit to fire. Doing so may result in burning.

For FHYCP and FCQ-units (See figure 6)


- 1 Open the suction grille.
Push both knobs simultaneously and carefully lower the grille. (Identical procedure for closing.)
- 2 Remove the air filters.
Pull the air filter clips toward you, and detach the filter.
- 3 Clean the air filter. (Refer to [figure 3](#)  air flow direction over filter.)
Use vacuum cleaner or wash the air filter with water. When the air filter is very dirty, use soft brush and neutral detergent.
- 4 Remove water and dry in the shade.
- 5 Fix the air filter.
Attach the air filter to the suction grille by hanging it to the projected portion above the suction grille.
Press the bottom of the air filter against the projections on the bottom of the grille to snap the air filter into its place.
- 6 Shut the air inlet grille.
Refer to item 1 "[Open the suction grille.](#)" on page 5.
- 7 After turning on the power, press the FILTER SIGN RESET button.
The "TIME TO CLEAN AIR FILTER" display vanishes.

For FHYBP and FBQ-units (See figure 7)

- 1 Open the suction grille. (Only for bottom suction.)
Slide both knobs simultaneously as shown and then pull them downward.
If chains are present, unhook the chains.
- 2 Remove the air filters.
Remove the air filters by pulling its cloth upward (rear suction) or backward (bottom suction).
- 3 Clean the air filter. (Refer to [figure 3](#)  air flow direction over filter.)
Use vacuum cleaner or wash the air filter with water. When the air filter is very dirty, use soft brush and neutral detergent.
Remove water and dry in the shade.
- 4 Fix the air filter.
Align the two hanger brackets and push the two clips in their place (pull the cloth if necessary, rear, bottom suction).
Confirm that the four hangers are fixed.
- 5 Shut the air inlet grille. (Only for bottom suction.)

- 6 After turning on the power, press FILTER SIGN RESET button.
The "TIME TO CLEAN AIR FILTER" display is turned off.

For FDYP and FDQ-units (See figure 5)

- 1 Remove the screws from the bottom of the filter frame and remove the filter frame downwards.
- 2 Clean the air filter. (Refer to [figure 3](#)  air flow direction over filter.)
Use compressed air for blowing dust particles of the filter. When the air filter is very dirty, use soft brush and neutral detergent or wash with hot (30-40°C) water if needed. Do not rub or wring.
- 3 Remove water and dry in the shade.
- 4 Fix the air filter. Put the air filter frame back in its position and fix firmly with the screws.

How to clean the suction grille

(See figure 6) (for FHYCP and FCQ only)

- 1 Open the suction grille.
Refer to "[How to clean the air filter](#)" on page 5.
- 2 Detach the suction grille.
Open the suction grille 45 degrees and lift it upward.
- 3 Detach the air filter.
Refer to "[How to clean the air filter](#)" on page 5.
- 4 Clean the suction grille.
Wash with a soft bristle brush and neutral detergent or water, and dry thoroughly.

NOTE



When the suction grille is very dirty, use a typical kitchen cleaner and let it sit for about 10 minutes. Then, wash it with water.

Do not wash the suction grille with hot water of more than 50°C. Doing so may result in discoloration and/or deformation.

- 5 Fix the air filter.
- 6 Reattach the suction grille.
See item 2 "[Detach the suction grille.](#)" on page 5.
- 7 Close the suction grille.
See item 1 "[Open the suction grille.](#)" on page 5.

How to clean air outlet and outside panels

- Clean with soft cloth.
- When it is difficult to remove stains, use water or neutral detergent.
- When the blade is extremely contaminated, remove it and clean or exchange it. (For FHYCP and FCQ only.) (Blade for exchange is optional.)

NOTE



Do not use gasoline, benzene, thinner, polishing powder, liquid insecticide. It may cause discoloring or warping.

Do not let the indoor unit get wet. It may cause an electric shock or a fire.

Do not scrub firmly when washing the blade with water. The surface sealing may peel off.

Do not use water or air of 50°C or higher for cleaning air filters and outside panels.

NOTES



DAIKIN EUROPE NV

Zandvoordestraat 300, B-8400 Oostende, Belgium

4PWEN10622-1E